

# MONTHLY MEMBERSHIP PROGRESS REPORT

LOCATION INDIA

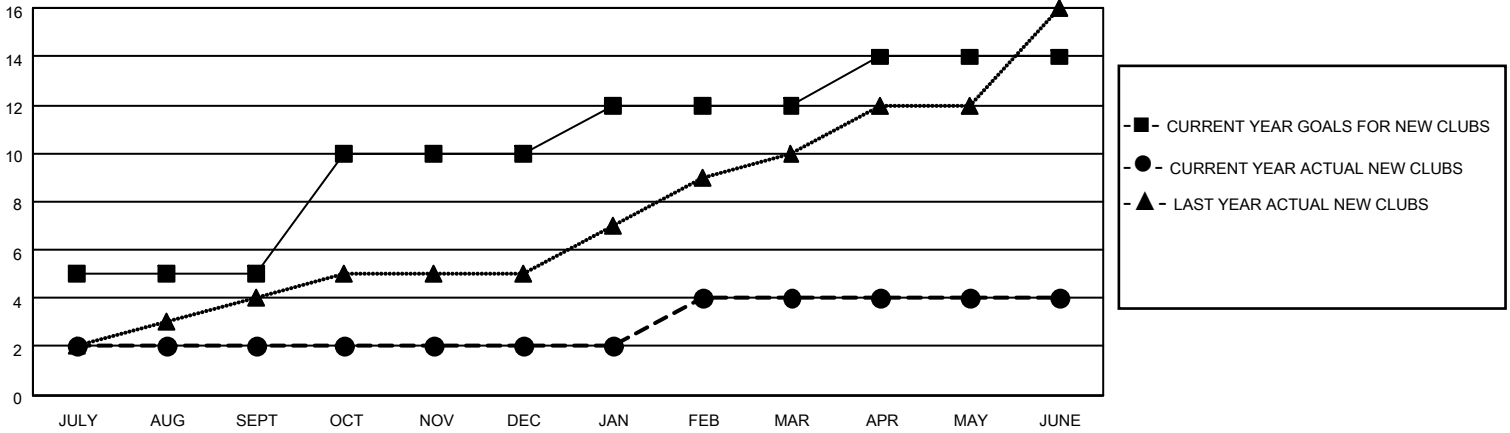
District 3234D1

Results as of: 6/30/2023

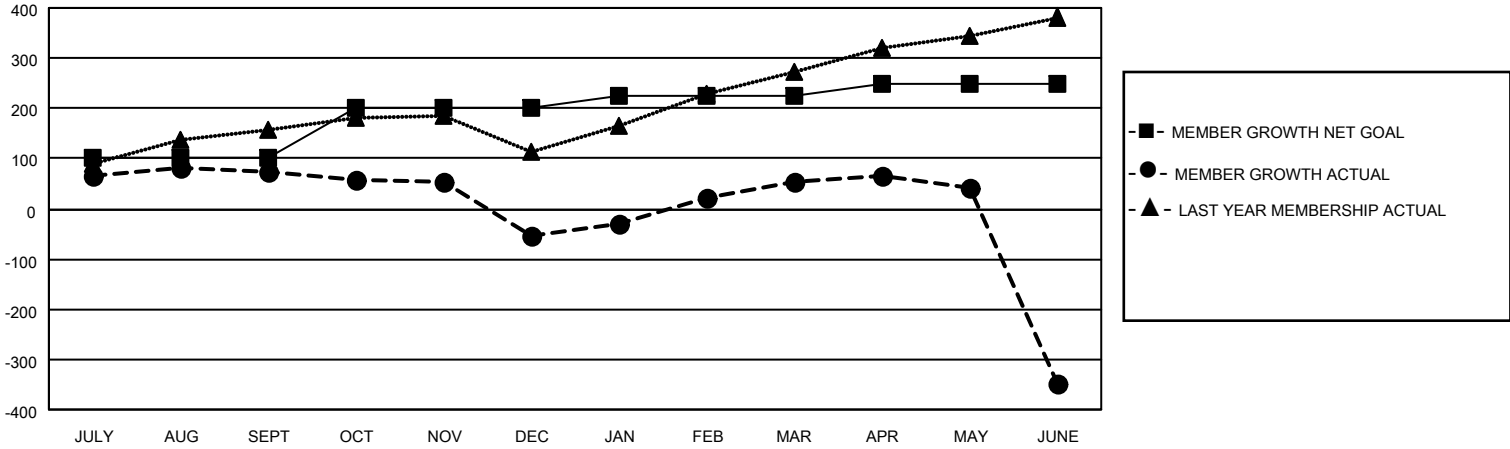
Clubs			
RESULTS FOR 2022-2023			
QUARTER	NEW CLUB GOAL	NEW CLUBS	DROPPED CLUBS
JULY/AUG/SEPT	5	2	0
OCT/NOV/DEC	5	0	2
JAN/FEB/MAR	2	2	0
APR/MAY/JUNE	2	0	7

Members			
RESULTS FOR 2022-2023			
QUARTER	MEMBER GROWTH NET GOAL	MEMBER GROWTH ACTUAL	DROPPED MEMBERS ACTUAL (including transfers)
JULY/AUG/SEPT	100	143	63
OCT/NOV/DEC	100	12	137
JAN/FEB/MAR	25	138	28
APR/MAY/JUNE	25	49	446

**GOALS AND ACTUAL NEW CLUBS CUMULATIVE**



**GOALS AND ACTUAL MEMBERS CUMULATIVE**



**DROPPED CLUBS: 9**

**43 CLUBS OF 87 ADDED 1 OR MORE NEW MEMBERS**

**GENDER DISTRIBUTION**

MALE	1,801 (70.71%)
FEMALE	746 (29.29%)
NON BINARY	0 (0.00%)
PREFER NOT TO ANSWER	0 (0.00%)

**DROPPED MEMBERS**

[CLICK HERE FOR CUMULATIVE MEMBERSHIP DATA](#)

DECEASED	7
CLUB CANCELLED	208
OTHER	459
<b>TOTAL</b>	<b>674</b>

TOTAL FAMILY UNIT MEMBERS	953
FAMILY MEMBERS PAYING HALF DUES	494